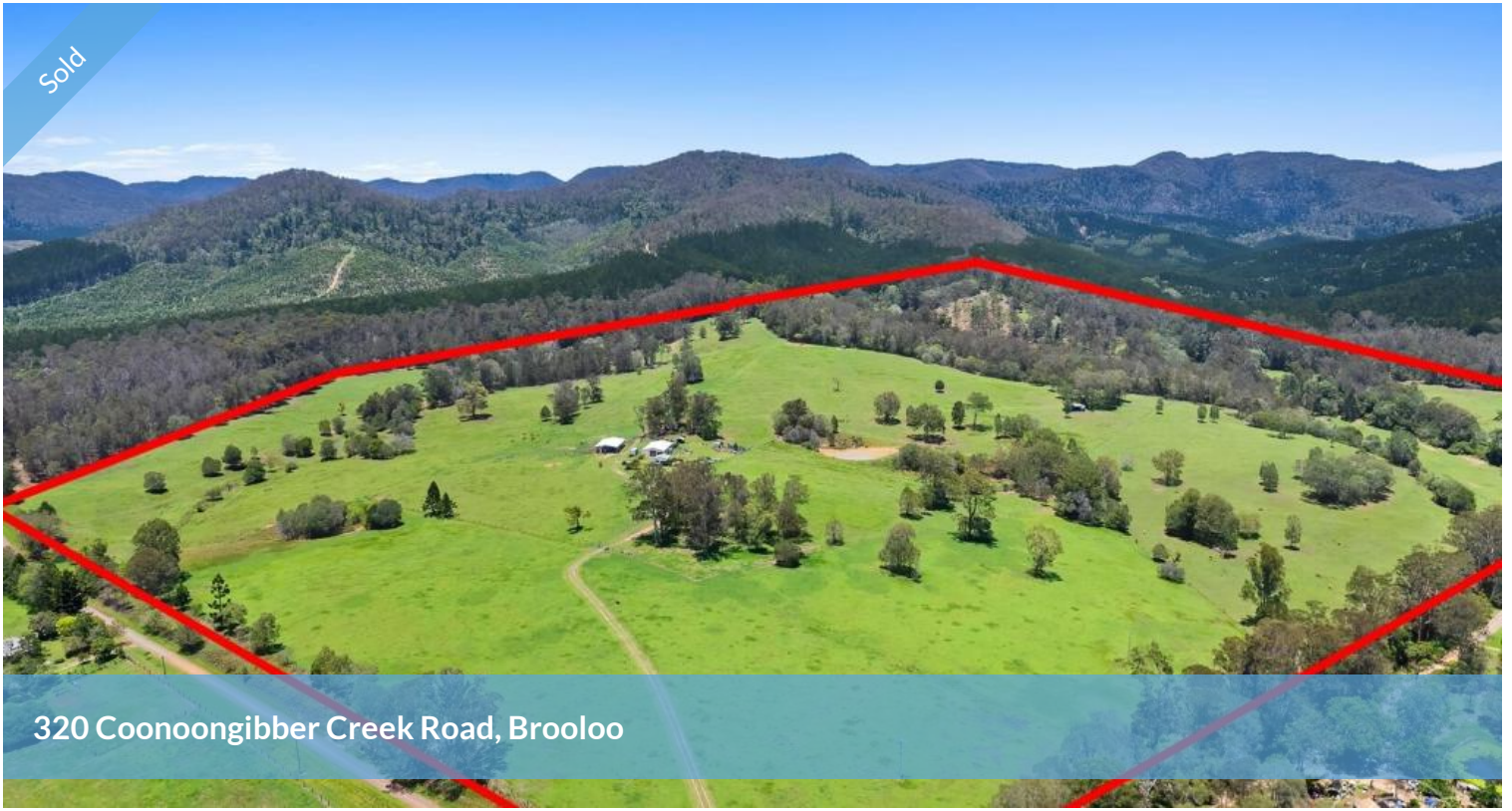


Sold



320 Coonoongibber Creek Road, Brooloo



LIFESTYLE OF MEMORIES!

With views to the Brooloo Bluff and range, this 161-acre grazing block is in an ideal location. 320 Coonoongibber Creek Road borders the Imbil State Forest, has double road frontage and no neighbours.

This property is equally suited to cattle or horses and is well fenced into 9 paddocks, all with their own water troughs, plus 4 dams and the Araucaria Creek running through. This block is just a picture with a generous scattering of large shade trees plus several elevated house sites with stunning views.

The current infrastructure includes a 20m x 12m high set structure giving complete cover to the cattle yards and crush, plus 20m x 12m fully enclosed farm shed with concrete floor, 3 phase power, kitchen/bar area and glass sliding doors leading out to the backyard.

Plus, a very tidy one-bedroom cottage with front porch to enjoy the sunsets, open planned living, dining, and kitchen and ensuite bathroom. And don't forget the quaint outdoor shower!

The property is well presented and has a spacious tack room, huge chook shed and yard, numerous water tanks and great veggie patch.

This property is a unicorn in a unique location at the very end of Coonoongibber Creek Road with direct access to the forest. Situated in between the Imbil and Kenilworth villages, 30 minutes from Gympie and 45 minutes to the coast at Noosa.

Inspections can be arranged by contacting Darren Newton from RJR Property on 0419 725 182.

 1  1  6  65.42 ha

Price SOLD for \$2,400,000

Property Type Residential

Property ID 902

Land Area 65.42 ha

Agent Details

Office Details

120 Yabba Rd, Imbil
07 5488 6000

7 Elizabeth St, Kenilworth
07 5446 0164



Grazing country for horses and cattle ... it's a lifestyle choice!