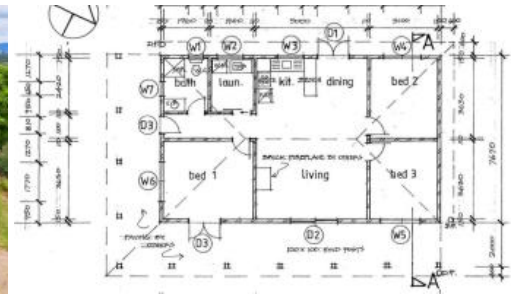
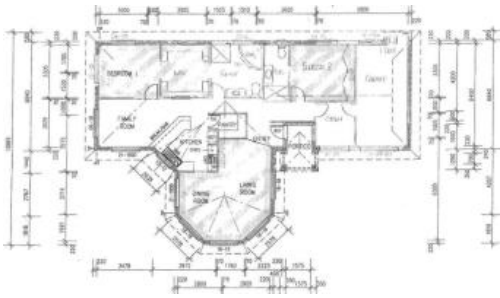


Sold



8 Bluff Road, Kenilworth



BLIND MANS BLUFF

"Blind Man's Bluff" - A magic spot, surrounded by the mountains! Located just 5 minutes from the popular village of Kenilworth, "Blind Man's Bluff" is a 30 acre property under the awe inspiring Kenilworth Bluff, offering privacy and tranquillity. Two houses share this picturesque site making it ideal for either an extended family or a farm-stay / B & B operation.

The main house is a stylish brick and tile home sitting closer to the Bluff. When you enter you can see the quality! The bay window shaped living/dining room is bathed in light and takes in a 180A,Â° view of the Bluff and surrounds. The kitchen, with its vibrant coloured cupboards, is central to the home, has all your appliances and a fantastic walk in pantry. A breakfast bar separates the kitchen from the family room. The family and living rooms both have access to a wide paved alfresco area with a wonderful view. This is a purpose built 2 bedroom home where the master bedroom has a bedroom sized walk through dressing room and access to the main bathroom. The guest bedroom has its own en-suite. There is a study and a single garage under the roof-line. What a great home - 2 bedrooms and a study without compromising on living area!

If the main house is stylish, the cottage has a touch of rustic charm. It is a little homestead-like with verandas on two sides of a painted solid block home with an iron roof. A low hedge separates the paved front veranda from the lawns that still have the posts for a great shade sail area. Vaulted pine lined ceilings with exposed beams, chandelier style lights and Mediterranean tiled floors set the scene for an open plan living area that includes a small kitchen. There are 3

5 3 1 120,000 m2

Price SOLD for \$585,000
Property Type Residential
Property ID 59
Land Area 120,000 m2

Agent Details

Ron Jeffery - 0402 223 201

Office Details

120 Yabba Rd, Imbil
07 5488 6000

7 Elizabeth St, Kenilworth
07 5446 0164



bedrooms and 1 bathroom.

The homes, while close, each have their own focus and provide individual secluded living.

Once there were vines, about 4,000 in fact! The vines are gone now but the irrigation infra structure, including 2 dams, is still in place. The block is suited to agriculture, viticulture and grazing, or just the quiet enjoyment of the natural surrounds.

A unique property that requires your inspection. Call Ron Jeffery to discuss!