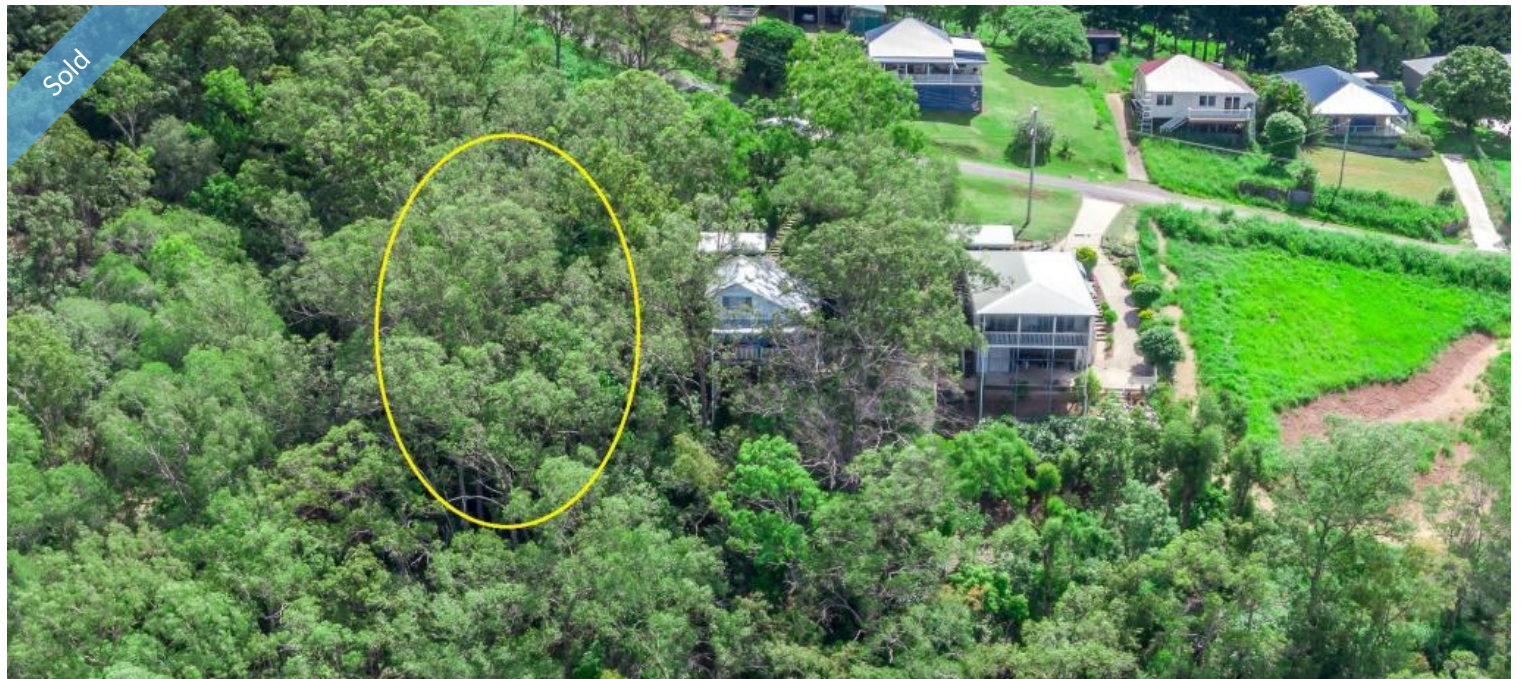


Sold



6 Selwyn Street, Imbil



## THINK OUTSIDE THE SQUARE!

Selwyn St is inside the village, but off grid, as far as water & sewerage are concerned. It's a well-treed section of Imbil.

It's a great opportunity to build a character home on a 1,138m<sup>2</sup> block with no covenants. This natural bush block has a gentle slope which would be ideally suited to timber or iron construction, or a traditional pole home. Enjoy the birdlife & wildlife in your very own retreat.

Power is close by ... but why not build completely off grid!

While other blocks are flat, boring and pricy, 6 Selwyn St offers value for money and the opportunity to build something unique.

With land at a premium in Imbil, this one can be snapped up for just \$125,000.

Imbil is set on the banks of Yabba Creek and the edge of the State Forest. It's the gateway to Borumba Dam. The village is less than half an hour from Gympie, 45 minutes from the coast at Noosa and about 10 minutes from the new freeway ... on your way to anywhere.

Inspections of the Imbil block can be arranged by contacting the team at ron jeffery realty. With 3 offices conveniently located in Imbil, Kenilworth & Montville, ron jeffery realty have you covered ... from the valley to the range!

6 Selwyn St Imbil ... think outside the square!

📏 1,138 m<sup>2</sup>

**Price** SOLD for \$125,000  
**Property Type** Residential  
**Property ID** 582  
**Land Area** 1,138 m<sup>2</sup>

### Agent Details

Darren Newton - 0419 725 182  
Ian Naylor - 0466 341 065

### Office Details

120 Yabba Rd, Imbil  
07 5488 6000

7 Elizabeth St, Kenilworth  
07 5446 0164



**RJR Property**