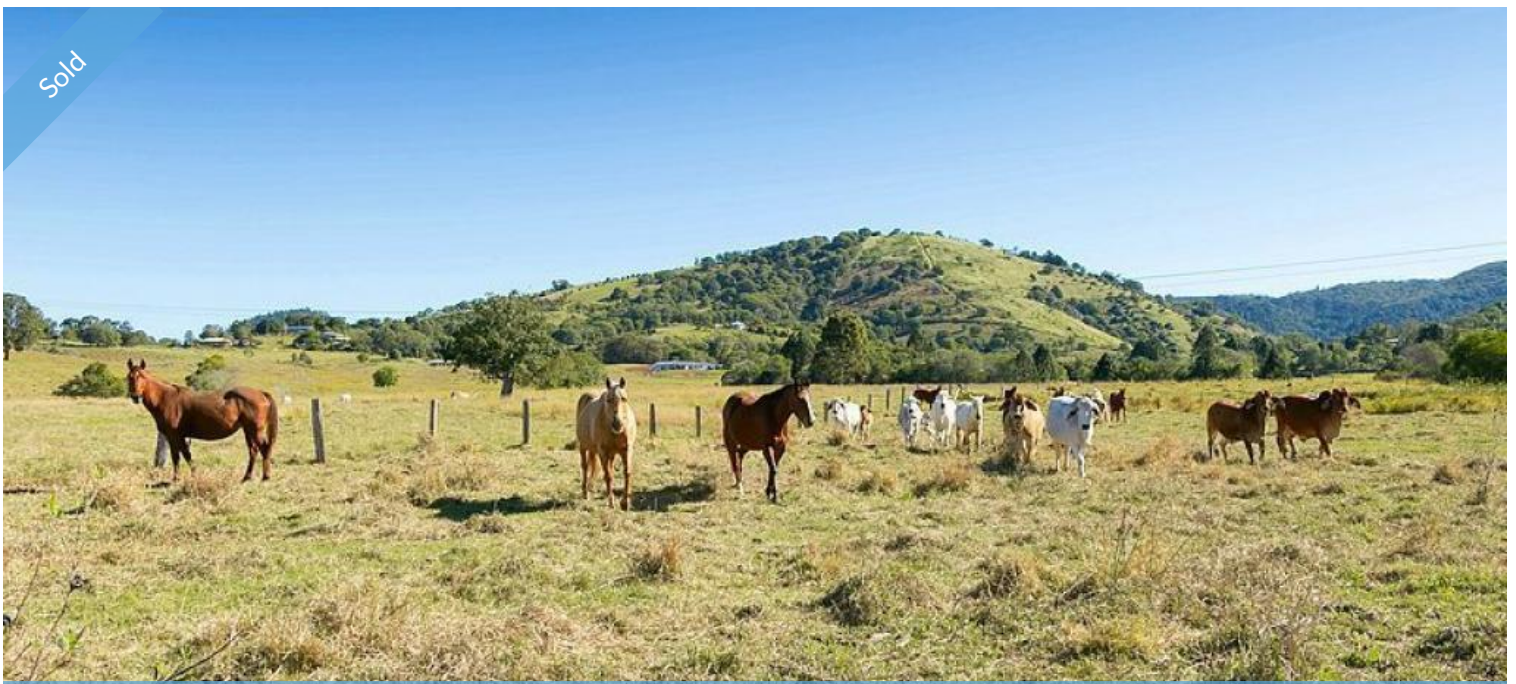


Sold



Lot , 68 Hutchins Road, Amamoor



## YOUR VERY OWN CREEK - AT A REDUCED PRICE!

Looking for vacant land with all the extras?

Try this one on Hutchins Rd, just a short distance off Mary Valley Rd.

The features include:

- 28 acres (11.35 ha) of productive grazing land,
- A spring fed creek running through the property,
- 4 ML water licence from the creek,
- Well fenced into 6 paddocks, all with creek access,
- A solar powered, liveable shed with bathroom and kitchen facilities,
- A new extra-large shed, built to take a mezzanine floor,
- All at an affordable price.

Hutchins Rd is located just 15 minutes from the centre of Gympie and a few minutes from the new Bruce Highway.

\*\*\* CLICK ON VIRTUAL TOUR TO HAVE A 3D BIRD'S EYE VIEW OF THIS PRODUCTIVE PROPERTY AND ITS SURROUNDS \*\*\*

Arrange your personal inspection by contacting the team at Ron Jeffery Realty.  
This property won't disappoint!

📏 113,500 m<sup>2</sup>

<b>Price</b>	SOLD for \$340,000
<b>Property Type</b>	Residential
<b>Property ID</b>	191
<b>Land Area</b>	113,500 m <sup>2</sup>

### Agent Details

Ian Naylor - 0466 341 065

### Office Details

120 Yabba Rd, Imbil  
07 5488 6000

7 Elizabeth St, Kenilworth  
07 5446 0164



**RJR Property**