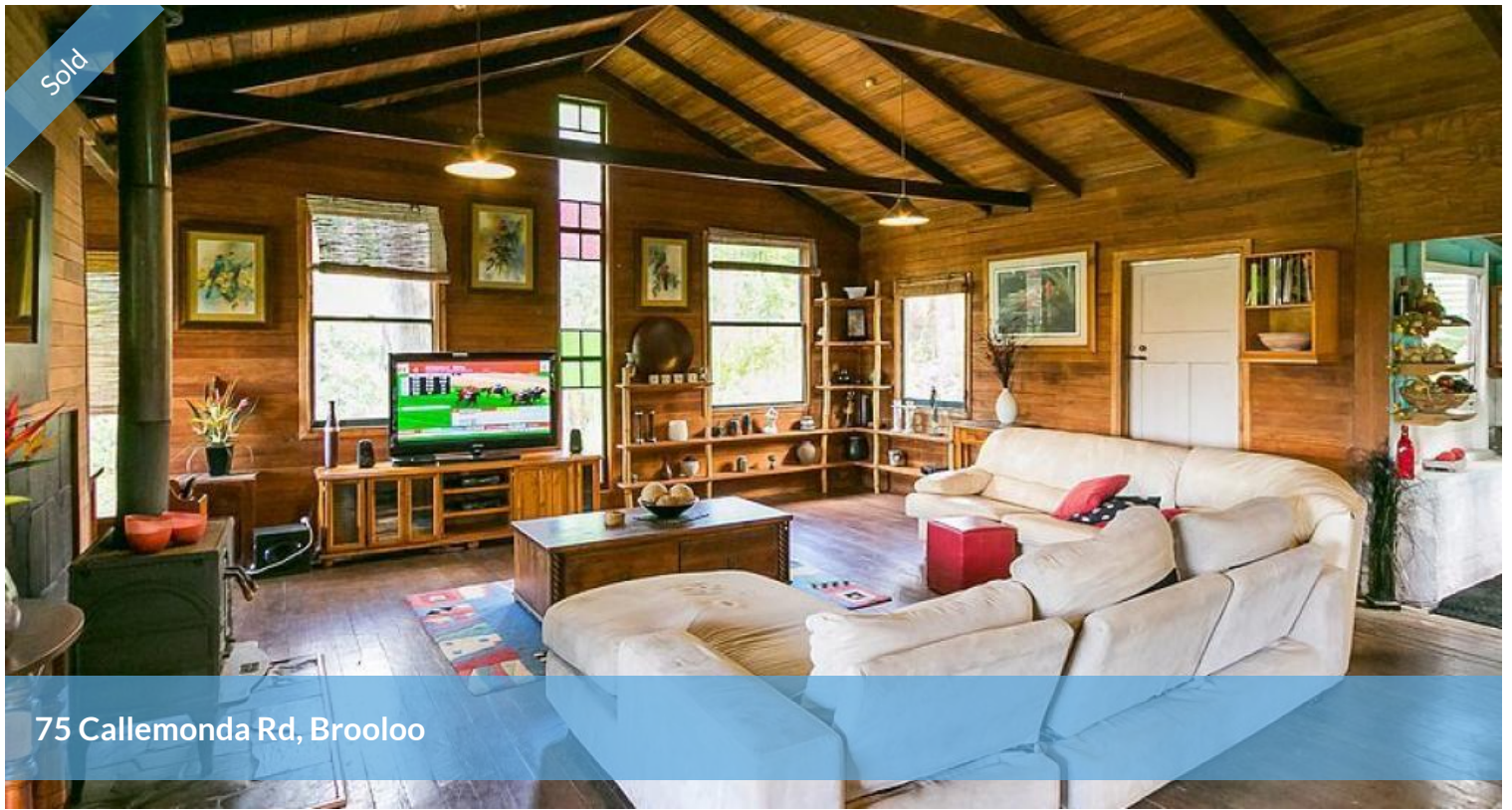


Sold



75 Callemonda Rd, Brooloo



WEEROONA - BROOLOO

Enjoy the Mary Valley lifestyle on this 5 acre property on Callemonda Rd, conveniently located between the villages of Imbil and Kenilworth. Number 75 is located towards the end of this "no through" road. This is half an hour from Gympie and 45 minutes from the coast at Noosa.

It's a quirky house, but a nice kind of quirky! An old timber house, hidden in the trees, overlooking a lush green paddock with a creek on the side. You walk down the path and enter the deck that ties it all together. There are two pavilions joined by the covered entry deck.

The living area pavilion sets the style - cathedral ceilings and exposed beams in a large, open plan room with timber, timber and more timber. Timber floors, walls and ceilings, and coloured glass windows at each end, gives it that quirky feel. A great open living area, slow combustion heating, a dining nook, a corner kitchen and a loft over the entry. This is why you come to the country!

There are two upstairs bedrooms in the other pavilion. The main bedroom has the same feel, but with carpet on the floor. The other bedroom is more conventional. The deck certainly adds to the relaxed feel of the property. External stairs join the upstairs to downstairs. Downstairs has another bedroom and the bathroom. AND a quirky little studio. There is a shed on the property too!

🛏 3 📶 1 🚗 2 📄 20,500 m2

Price	SOLD for \$312,500
Property Type	Residential
Property ID	128
Land Area	20,500 m2

Agent Details

Ron Jeffery - 0402 223 201

Office Details

120 Yabba Rd, Imbil
07 5488 6000

7 Elizabeth St, Kenilworth
07 5446 0164



** CLICK ON VIRTUAL TOUR FOR A 360 deg VIEW OF WEEROONA AND

SURROUNDS **

It's quiet, it's private and it's quirky!